

Oil and Stormwater: What goes into the storm drain goes into Bear Creek and the Rogue River.

Did you know?

Storm drains are NOT connected to the sewage treatment plant and stormwater ends up flowing into local streams and rivers.

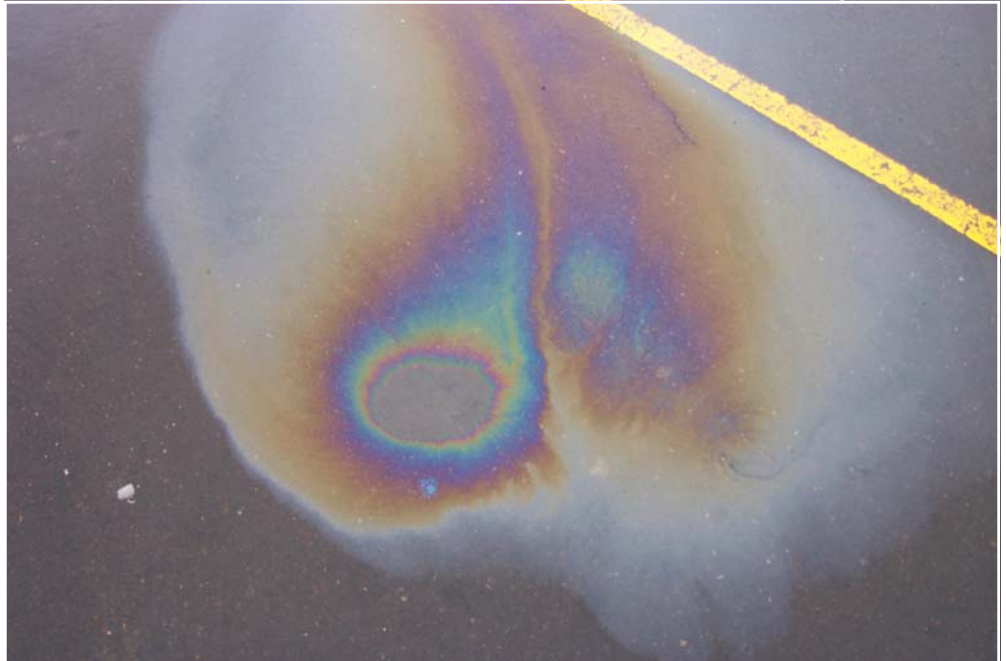
What's the problem with motor oil?

Oil does not dissolve in water. It lasts a long time and sticks to everything. Oil and other petroleum products are toxic to people, wildlife, and plants.

One pint of oil can make a slick larger than a football field. Oil that leaks from our cars onto roads and driveways is washed into storm drains, and then usually flows directly to a local creek, to the Rogue River, and finally to the ocean.

Used motor oil is the largest single source of oil pollution in our ocean, streams, and wetlands. Americans spill 180 million gallons of used oil each year into our waters. This is **16 times** the amount spilled by the Exxon Valdez in Alaska.

Information courtesy of the City of Carlsbad.



What You Can Do

- Stop drips. Check for oil leaks regularly and fix them promptly. Maintain your car to reduce oil use.
- Use ground cloths or drip pans beneath your vehicle if you have leaks or are doing engine work.
- Clean up spills immediately. Collect all used oil in containers with tight fitting lids. Do not mix different engine fluids.
- When you change your oil, dispose of it properly. Never dispose of oil or other engine fluids down the storm drain, on the ground, or into a drainage ditch.
- Recycle used motor oil.



For more information contact the Rogue Valley Council of Governments Natural Resources Department (541) 664-6674 or visit www.rvcog.org.

